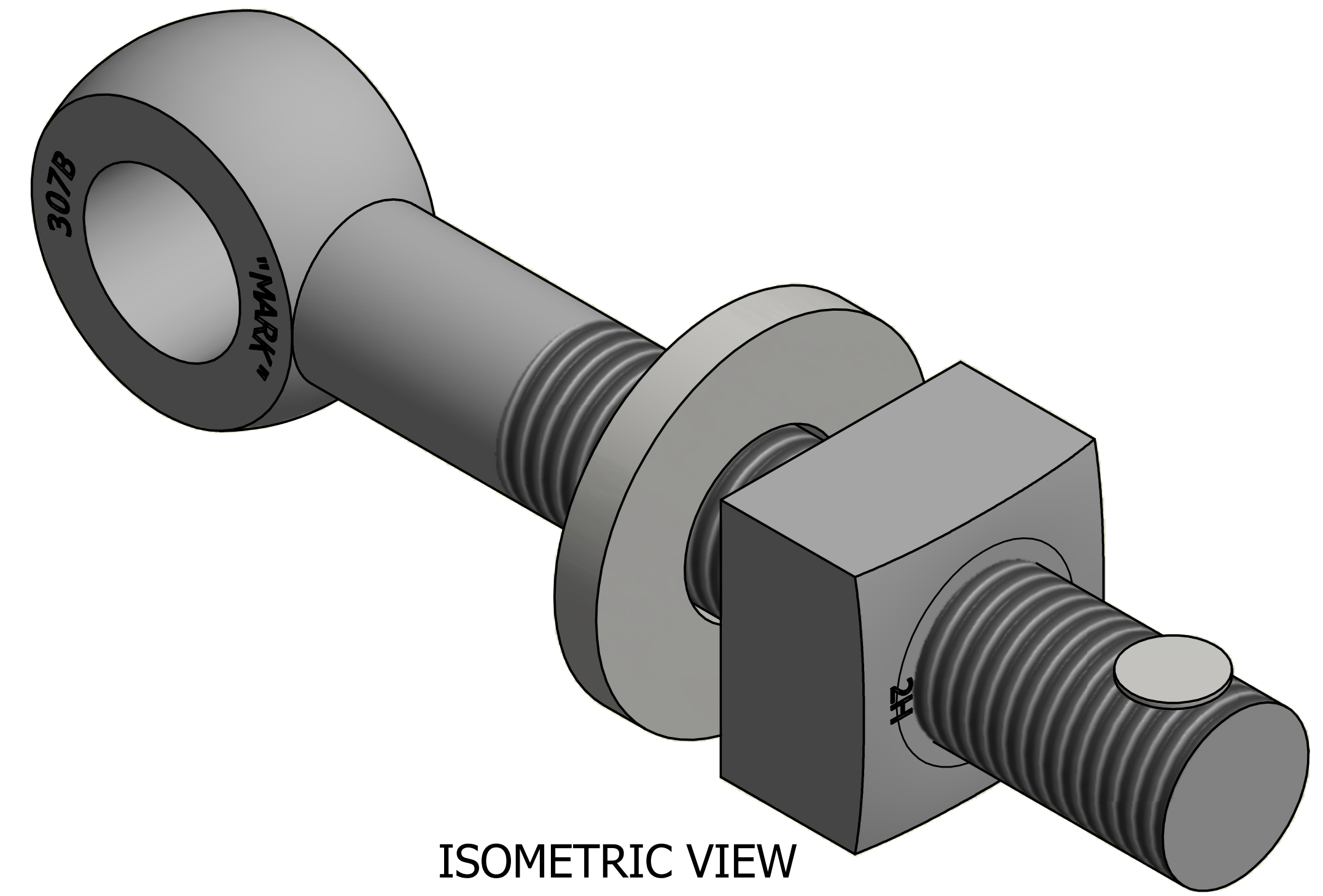
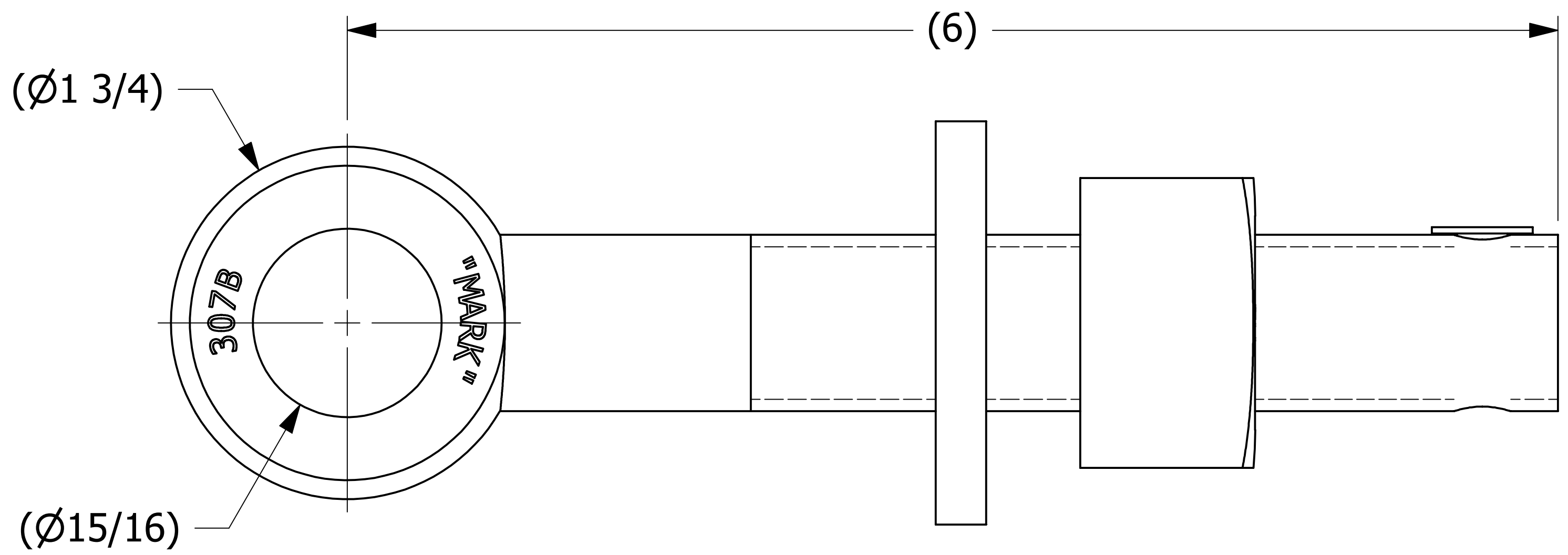
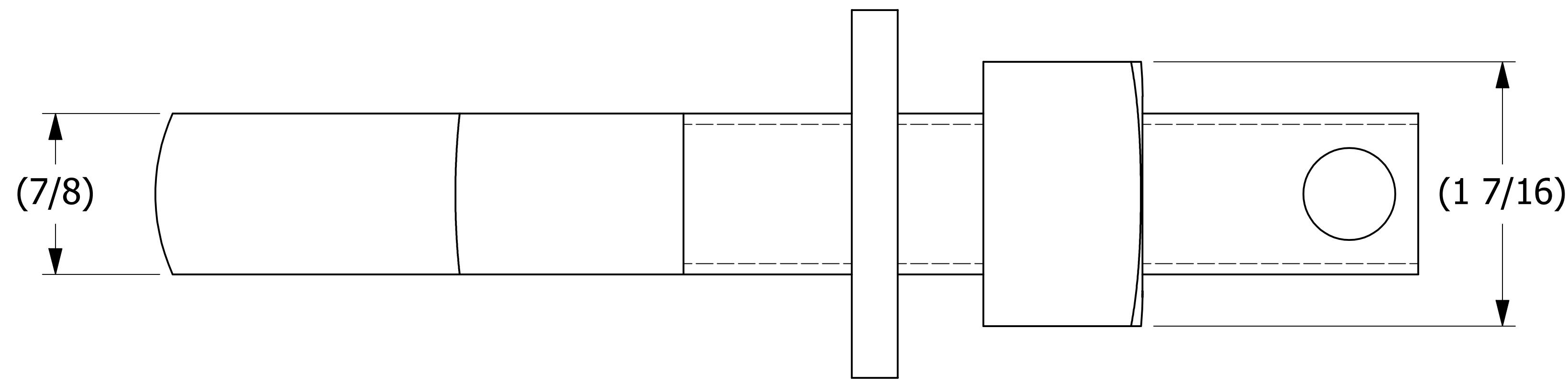


SALES DRAWING

SALES DRAWING



D	BRG	1-20-09	UPDATED EYEBOLT MATERIAL
C	CHL	6-10-02	CHANGED MATERIAL OF WASH78T FROM CS Z/P
B	CHL	11-26-01	REPLACED SN14S WITH A16204
A	FOD	6-1-99	CHANGED PART # ON ITEM #1 WAS EBR786 AND UPDATED DRAWING WITH NEW STANDARDS
REV	BY	DATE	DESCRIPTION

UNLESS OTHERWISE SPECIFIED DIMENSIONAL TOLERANCES FRACTIONAL: ±1/16 X.XX: ±.03 X.XXX: ±.015 ANGULAR: ±1° DEBURR ALL SHARP EDGES. ALL MACHINED SURFACES TO HAVE A 125 RMS FINISH UNLESS NOTED OTHERWISE. THIRD ANGLE PROJECTION	DRAWN BY:	TJN
	CHECKED BY:	
	PROTOTYPE BY:	TJN
	PROTOTYPE DATE:	1/20/2009
	APPROVED FOR PRODUCTION BY:	TJN
PRODUCTION DATE:	3/4/1993	

SALCO PRODUCTS, INC.		
PART NAME: EYEBOLT ASSEMBLY 7/8"X6"		
MATERIAL: CARBON STEEL		
PROJECT #:	SHEET #: 1 OF 1	SCALE: 1:1
DRAWING #:	PART #: D5405 EB786A	

THIS PRINT, PROPERTY OF SALCO PRODUCTS INC. CONTAINS PROPRIETARY INFORMATION AND MUST NOT BE COPIED, REPRODUCED, OR USED DETRIMENTALLY TO OUR INTEREST.